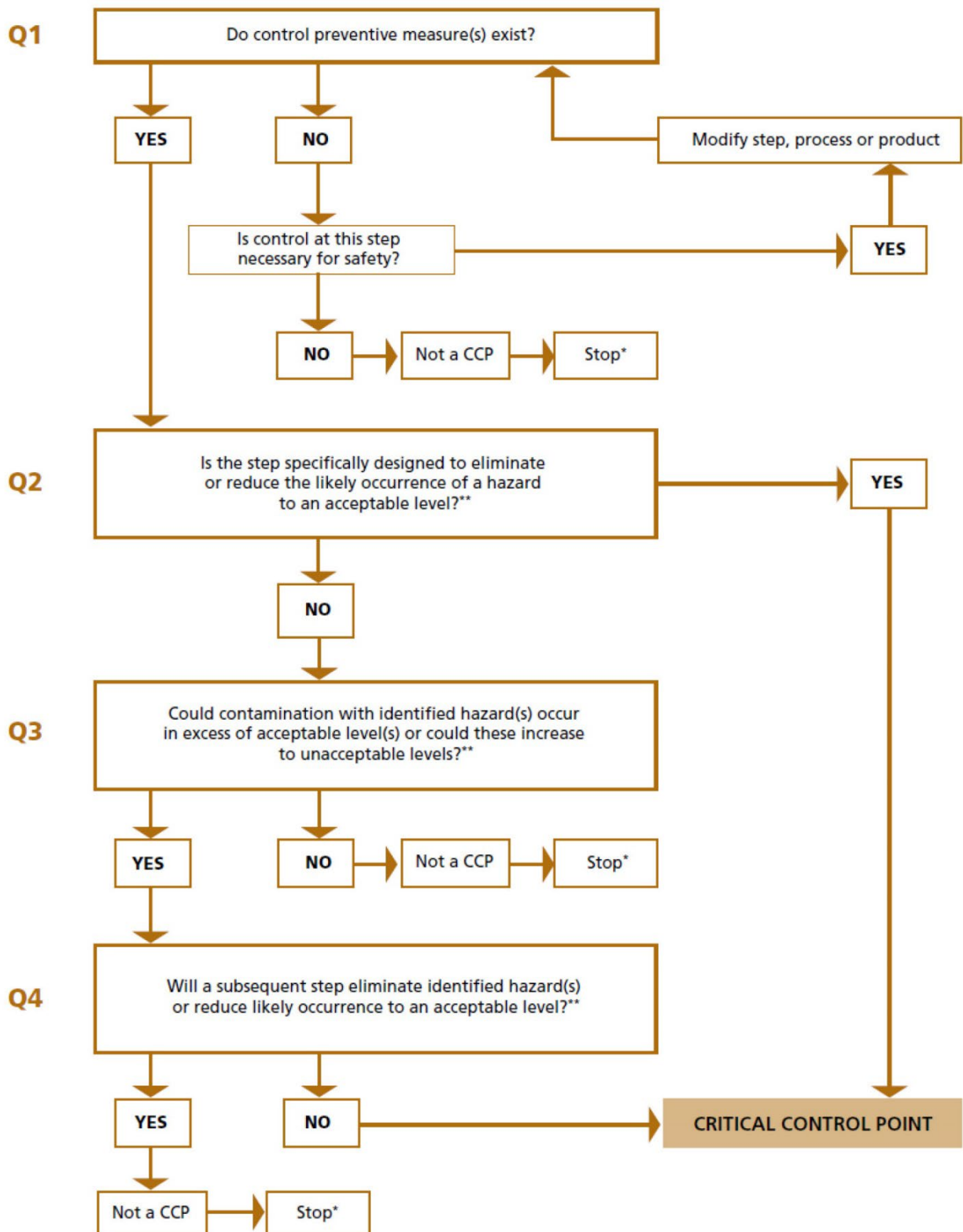


Example of decision tree to identify CCPs

(Answer questions in sequence)



*Proceed to the next identified hazard in the described process.

**Acceptable and unacceptable levels need to be defined within the overall objectives in identifying the CCPs of HACCP plan.

Text version of a decision tree to identify Critical Control Points (CCPs)

Question 1: Do control preventative measure(s) exit?

If yes, go to **Question 2**.

If no, is control at this step necessary for safety?

If yes, modify step, process, or product.

If no, not a CCP. Stop and proceed to the next identified hazard in the described process.

Question 2: Is the step specifically designed to eliminate or reduce the likely occurrence of a hazard to an acceptable level?

If yes, it's a **Critical Control Point**.

If no, go to **Question 3**.

Question 3: Could contamination with identified hazards occur in excess of acceptable level(s) or could these increase to unacceptable levels?

If yes, go to **Question 4**.

If no, not a CCP. Stop and proceed to the next identified hazard in the described process.

Question 4: Will a subsequent step eliminate identified hazard(s) or reduce likely occurrence to an acceptable level?

If yes, it's not a CCP. Stop and proceed to the next identified hazard in the described process.

If no, it's a **Critical Control Point**.